



Sublease - Plug + Play

1331 17th Street

Denver, CO

RSF

2,760 SF

RENTAL RATE

\$40/SF FSG

AVAILABLE

Immediately

PARKING

3.00 / 1,000 SF

AMENITIES

Fitness +
Conference

TERM

Through
December 31, 2033



ABOUT THE BUILDING

Located in the heart of Denver's LoDo neighborhood, 1331 17th Street offers convenient access to Union Station, I-25, and a wide range of nearby dining, retail, and lifestyle amenities within walking distance.

The building features 24/7 security along with access to a tenant amenity center, on-site fitness center, and fully equipped conference facilities.

Broker Team



Andy Cullen

Partner / Managing Broker

andy@tre.inc

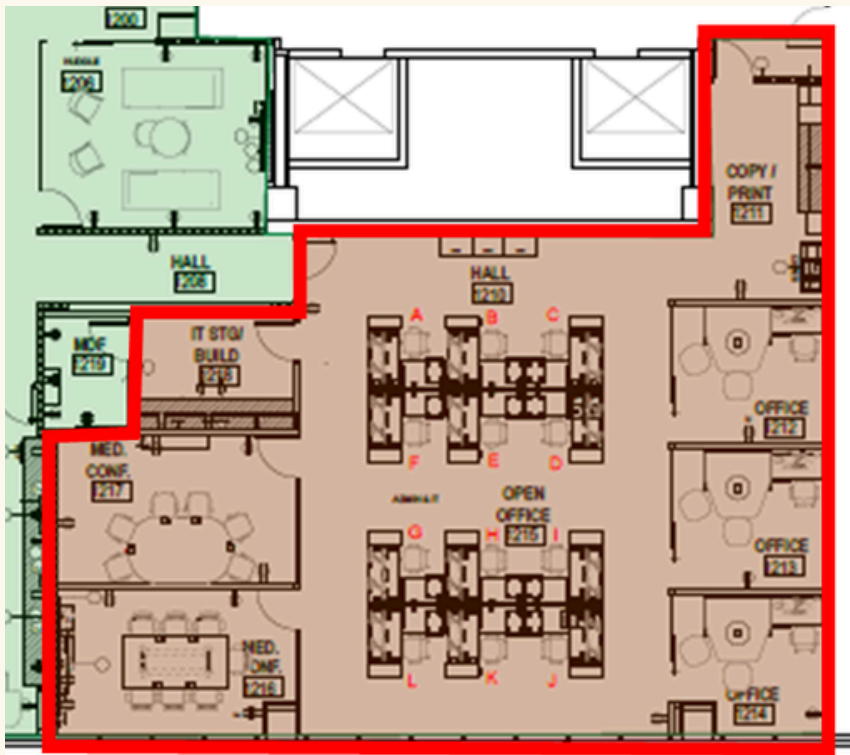
720.933.9411

Jona Behm

Vice President

jona@tre.inc

720.394.8694



ABOUT THE SPACE

- Western facing views
- Furniture negotiable
- 3 Offices
- 2 Conference Rooms
- 12 Work Stations
- Copy / Print
- Storage

Broker Team



Andy Cullen
Partner / Managing Broker
andy@tre.inc
720.933.9411

Jona Behm
Vice President
jona@tre.inc
720.394.8694